

WARNING: DO NOT USE NORMAL LOW VOLTAGE TRANSFORMERS WITH LEDs.

All LED fittings are tested before dispatch. It is not necessary to check them on site. Do not power up until fittings are wired correctly.

INSTRUCTION LEAFLET

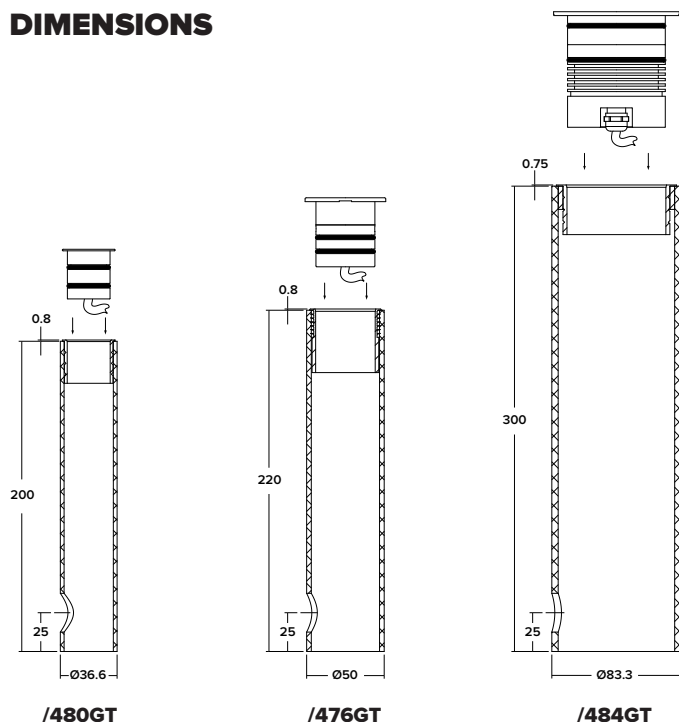


In-ground Tube

First fix mounting using /476GT, /480GT & /484GT.

This product should be installed by a qualified electrician in accordance with all current, local legislation. For the UK, the current edition of the IEE Wiring Regulations and European Standard IEC 60364.

DIMENSIONS



INSTALLATION

1. Create hole for the in-ground tube, and channel from hole to driver source.

NOTE: It is not recommended that the fixing tube is driven straight into the ground. The inside of the tube must be clear of soil during the installation of the LED fitting.

2. Pass cable from driver through the bottom cut-out of the tube and pull it out of the top.

3. Wire the luminaire to a specified driver.

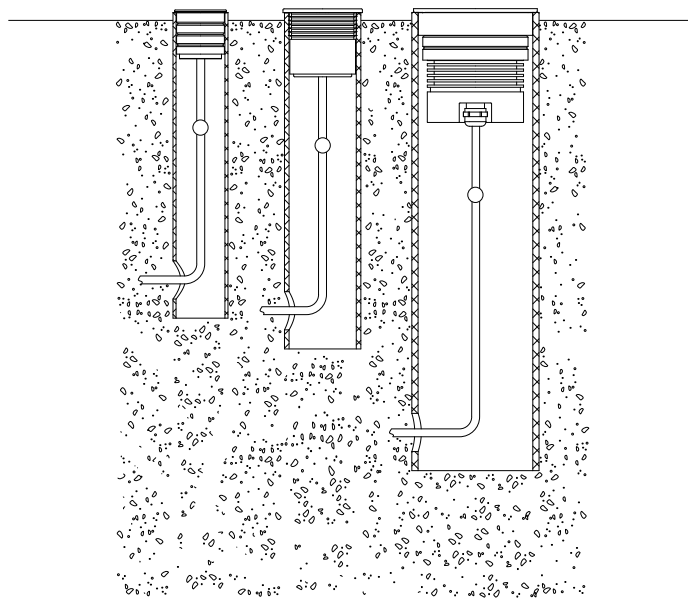
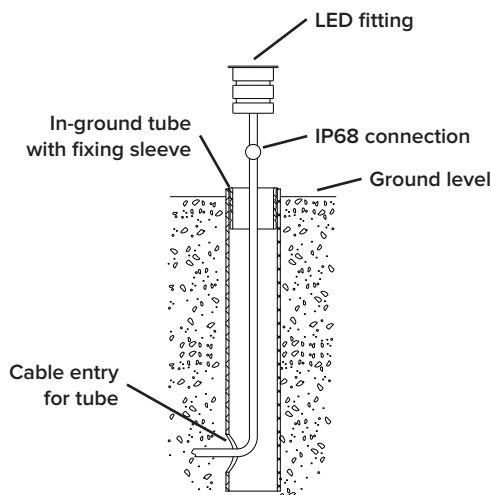
NOTE: Connections in wet environments. Make IP68 connection to stop water travelling up the cables into the fittings! Refer to IP connection sheet for further details.

4. Position tube vertically in ground. Keep the top of the tube above ground level.

5. Push luminaire in to the fixing sleeve mounted in the tube. Make sure O-rings are free on grit, dirt and moisture before installing.

6. Fill earth round tube.

7. Push fitting into ground keeping it just above the surface.



SUPPORTED FITTINGS

/480GT - LD41, LD42, LD60, LD61, LD62, LD64 and LD65.

/476GT - LD56, LD56T and LD56RGB.

/484GT - LD151

WARNING

Refer to specified driver sheet for correct wiring instructions.

Refer to IP connection sheet for instructions on IP rated connections.

Do not switch on power source prior to making these connections as this will result in the LEDs being overvolted and can lead to LED failure.

Do not exert excessive force on the Polycarbonate tube when handling or when installing into the ground.

Connect pairs of cables (e.g. red + / black -) from LED fittings to specified driver. Multiple fittings with constant current LEDs are wired in Series.

POLARITY IS CRITICAL!

If LEDs don't work, turn power off immediately, then check polarity. Failure to do so will excessively heat up the LED, Causing them to fail.